

Oxford City Active Travel

Overview of all Active Travel 2021/22 proposals

KEY:

- LTN Low Traffic Neighbourhood denoted by shaded area
- CMD Cabinet Member Decision
- Proposed Quietway cycle route to be introduced with LTNs
- Proposed Quickway cycle route Public consultation Sept/Oct 2021
- Proposed 20mph speed limit

Woodstock Road Corridor Improvement project, which includes further cycling / pedestrian improvements
Consultation due to start soon

Headington and Quarry LTNs public consultation to commence Dec 2021

Old Headington LTN

Quarry LTN

New Headington LTN

St Clements LTN

Divinty Rd LTN

East Oxford LTNs targeted consultation / engagement in progress. Outcome to be reported to Dec 2021 CMD

St Marys LTN

Temple Cowley LTN

Cowley LTNs have been implemented on an experimental basis and are currently being consulted on.

Florence Park LTN

Church Cowley LTN

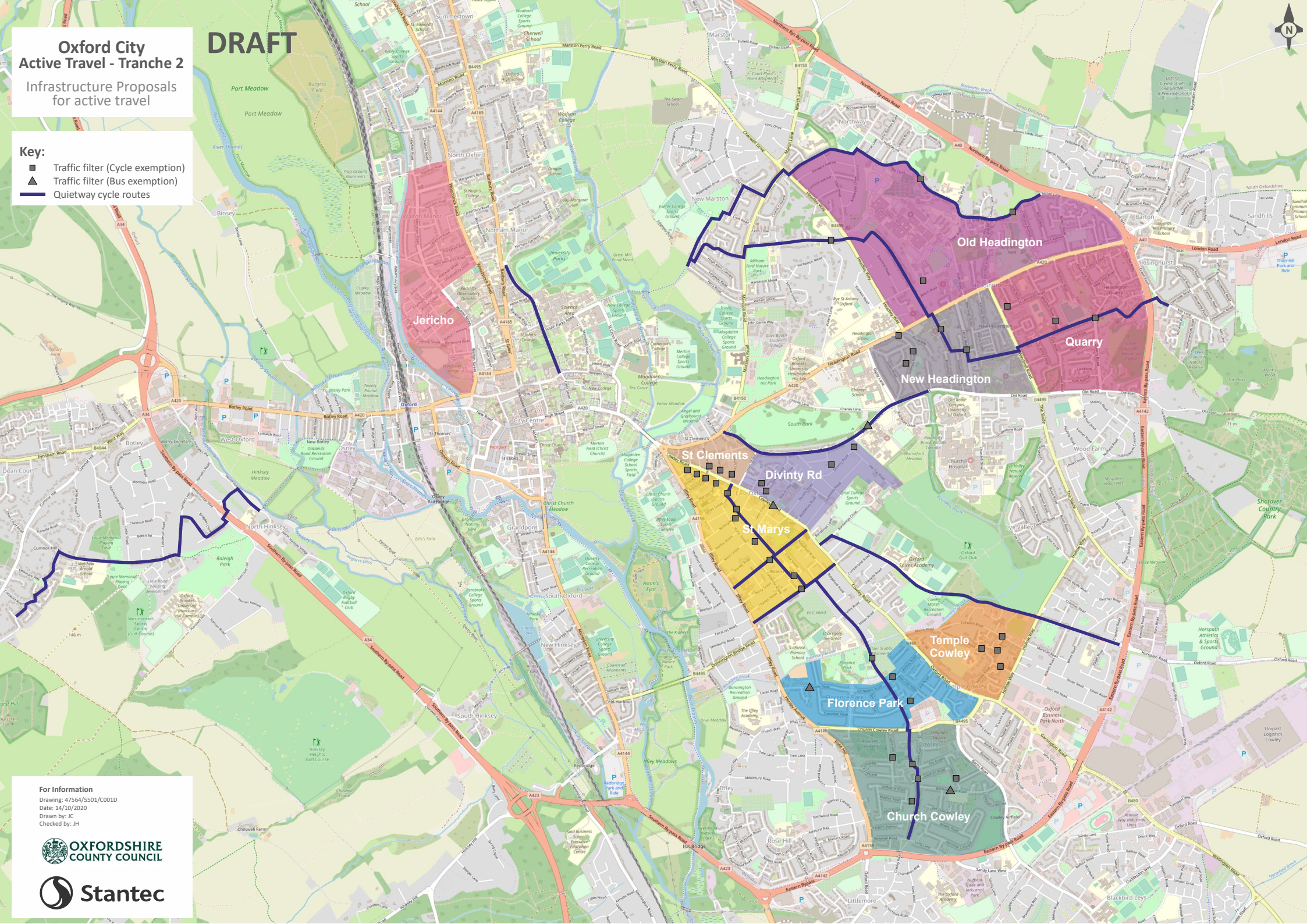


DRAFT

Oxford City Active Travel - Tranche 2

Infrastructure Proposals for active travel

- Key:**
- Traffic filter (Cycle exemption)
 - Traffic filter (Bus exemption)
 - Quietway cycle routes



For Information
 Drawing: 47564/5501/C001D
 Date: 14/10/2020
 Drawn by: JC
 Checked by: JH

